



AVH2117AX

16CH PoE Solution
EaZy Networking
Push Video / Push Status
Alarm Scenario Setup

16CH H.265 NVR w/ 16CH PoE

Features

H.265 Compression Technology

With this compression technology, the recording capacity is greatly enhanced as well as bandwidth saving for better efficiency and performance than the systems employing other compression formats

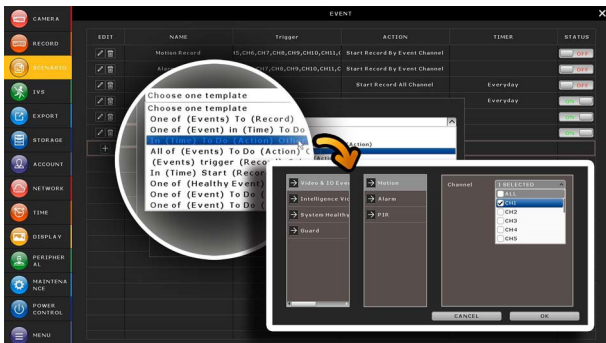


Cloud Service - EaZy Networking*

- EaZy Networking, the cloud service provided by AVTECH, available to connect this device to Internet automatically in three steps with our free mobile app, EagleEyes.
- The "Buddy" feature to share the device access permission to other people.
- Device login / out notifications reported.

Alarm Scenario Customization

"Scenario" is a new feature allowing you to customize a series of actions which will be run automatically after the specified event occurs. There are several scenario templates for you to choose when and what to do after a specific event occurs.



Push Video & Push Status - Active Event Notification with EagleEyes App

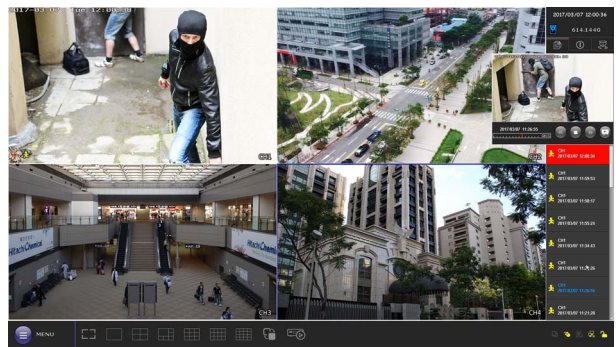
- Push Video to send instant notifications for an alarm event when an alarm device is connected to the recorder.
- Push Status to send instant notifications for system events, such as video loss or HDD data removal.

One Ethernet Cable Solution (POE, Power-over-Ethernet)

Camera power supply & video transmission over one Ethernet cable to eliminate the needs of power adapters for your cameras during the whole HD surveillance system setup.

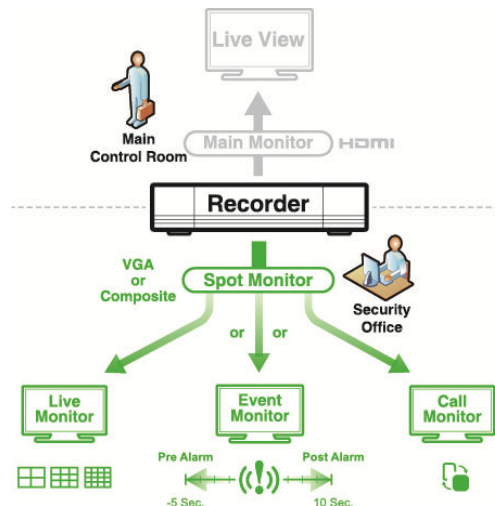
Event Pop-up / Preview

All events are listed on the right panel with corresponding event icons for you to quickly recognize the event type. The most current one will flash to catch your attention. Click one event and you're able to preview the footage with pre-alarm images.



Spot Monitor

In addition to the main display via the main HDMI output, you can assign a secondary display to show live view, call monitor or event monitor.



Specifications*

Hardware		
Video Input		LAN port with PoE x 16
Video Output	HDMI	YES (4K2K)
	VGA**	YES (720P / Spot Monitor Supported)
	Composite	YES (Spot Monitor Supported)
Video Output Resolution		Up to 4K2K (3840 x 2160)
Audio		1 in (mic in) / 1 out
Alarm I/O		4 in / 1 out
RS485		YES
HDD Storage***		Either two 16TB SATA HDD installed in the recorder, or one 16TB SATA HDD installed and a disk array connected to the recorder via the eSATA interface
USB Port		USB 2.0 x 2
eSATA Port		Expandable with a SATA to eSATA cable
Ethernet	LAN port	10/100 Mbps with PoE (IEEE802.3af)
	WAN port	1000 Mbps x 1
Fan		YES
Software		
Video Compression Format		H.265
Audio Compression Format		G711
Local / Remote Display Mode		16CH
Local / Remote Playback Mode		16CH
Local Single Channel Playback		YES
Recording Mode		Manual / Event / Alarm / Schedule
Record Streaming		Dual
Recording Resolution		480 IPS @ 4K2K (3840 x 2160)
Recording Throughput		80Mbps
Pre-alarm Recording		YES
Quick Search		Time / Event
Event Notification		Push Video / Push Status / Video Mail / Message Mail
Security		Multiple user access levels with password
Multicast		YES
Seamless Recording****		YES
EaZy Networking		YES
IVS****		YES (16CH)
Spot Monitor Setup		Call Monitor / Event Monitor / Live Monitor (VGA or Composite)
Alarm Scenario Setup		YES
Alarm Pop-up & Preview		YES
Free DDNS Service		YES

Specifications*

Network		
Protocols	DDNS, PPPoE, DHCP, NTP, SNTP, TCP/IP, ICMP, SMTP, FTP, HTTP, RTP, RTSP, RTCP, IPv4, UPnP, DNS, UDP, IGMP	
ONVIF Compatible	YES	
Max. Online User	40	
Remote Access	Web browser	Windows Edge, Google Chrome, Mozilla Firefox & Opera on Windows 10 (and later versions) and Google Chrome & Mozilla Firefox on MAC
	PC program	32CH CMS software for Windows OS
	Mobile app	EagleEyes on iOS & Android mobile devices
General		
Power Source ($\pm 10\%$)	DC54V / 3.2A	
PoE Power Output	IEEE802.3af, 130W total	
Operating Temperature	10°C ~ 40°C (50°F~104°F)	
Operating Humidity	10% ~ 85%	
Dimensions (mm)*****	319.5 x 254.9 x 52	
Net Weight (kg)	2	
Minimum PC Browsing Requirements	<ul style="list-style-type: none"> • Intel core i3 or higher, or equivalent AMD • 2GB RAM • AGP graphics card, Direct Draw, 32MB RAM • Windows 10 and later versions • Windows Edge, Google Chrome, Mozilla Firefox & Opera on Windows 10 (and later versions) 	
Optional Peripherals	SATA to eSATA cable (PWSC07F320200)	
Certification	CE / UL (Power Adapter)	

*The specifications are subject to change without notice. ** unavailable when the HDMI video display is set to 4K2K. *** HDDs are optional.
 **** Available only when the connected cameras are supported. ***** Dimensional tolerance: $\pm 5\text{mm}$

Rear Panel

